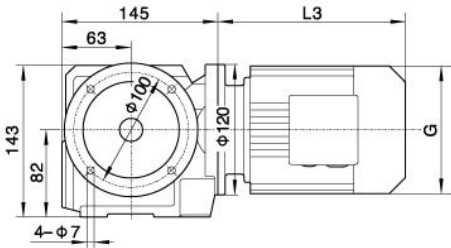


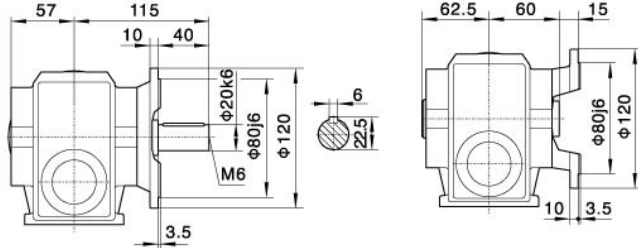
外形安装尺寸
Mounting Dimension Sheets-overview

S

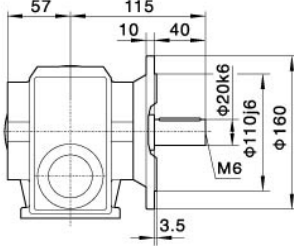
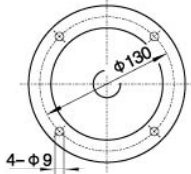
SF37/φ120



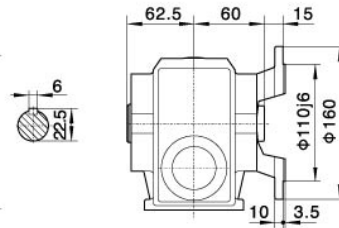
SAF37/φ120



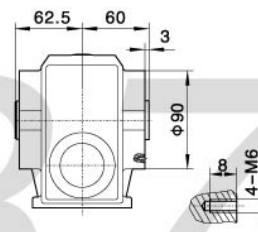
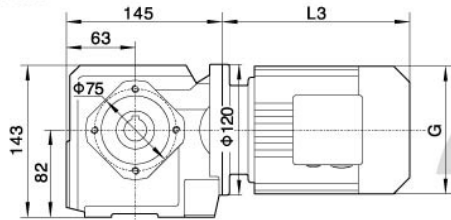
SF37/φ160



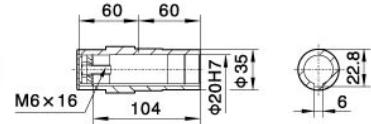
SAF37/φ160



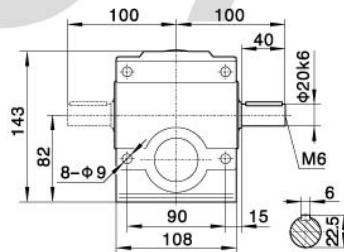
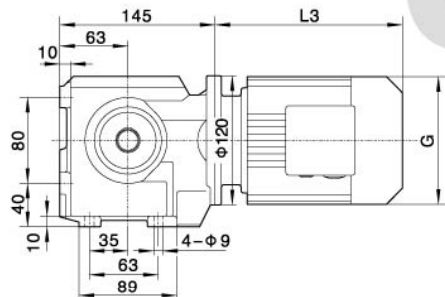
SA37



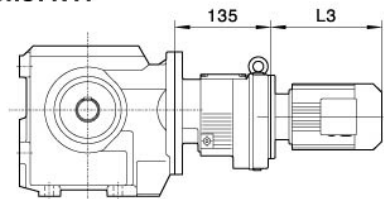
SAF37/SA37/SAZ37
空心轴/Hollow shaft



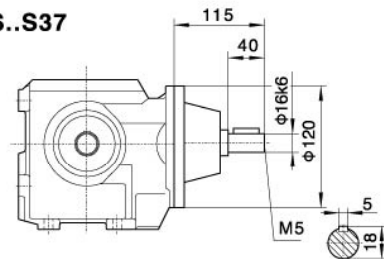
S37



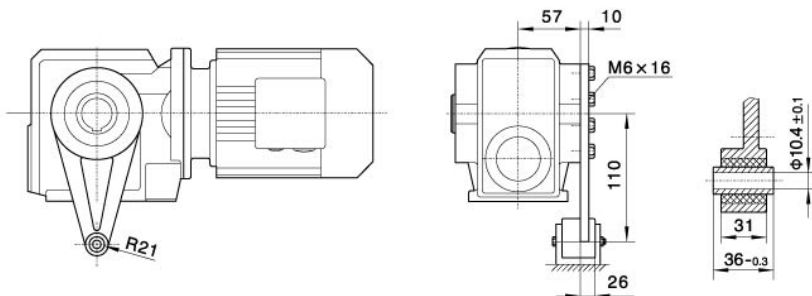
S..37R17



S..S37



SAT37



电机需方配或配特殊电机时需加联接法兰
When equipping the user's motor or the special one, the flange is required to be connected.

注: 其余尺寸见相对应结构形式
Note: For other values please refer to the opposite structure.

Y ₂ 电机座号 Motor size	63	71	80
功率/4P Power/(kW)	0.18	0.25 0.37	0.55 0.75
L3	235	245	278
G	130	145	175
L2	71	71	71

注: 1.SA、SF、SAF、SAZ壳体为通用件, 安装尺寸均可相互参照。2."S.."表示S、SA、SF、SAF、SAZ

Note: 1.The housings of SA、SF、SAF、SAZ are common parts. The mounting dimensions may consult each other. 2."S.."mean S、SA、SF、SAF、SAZ